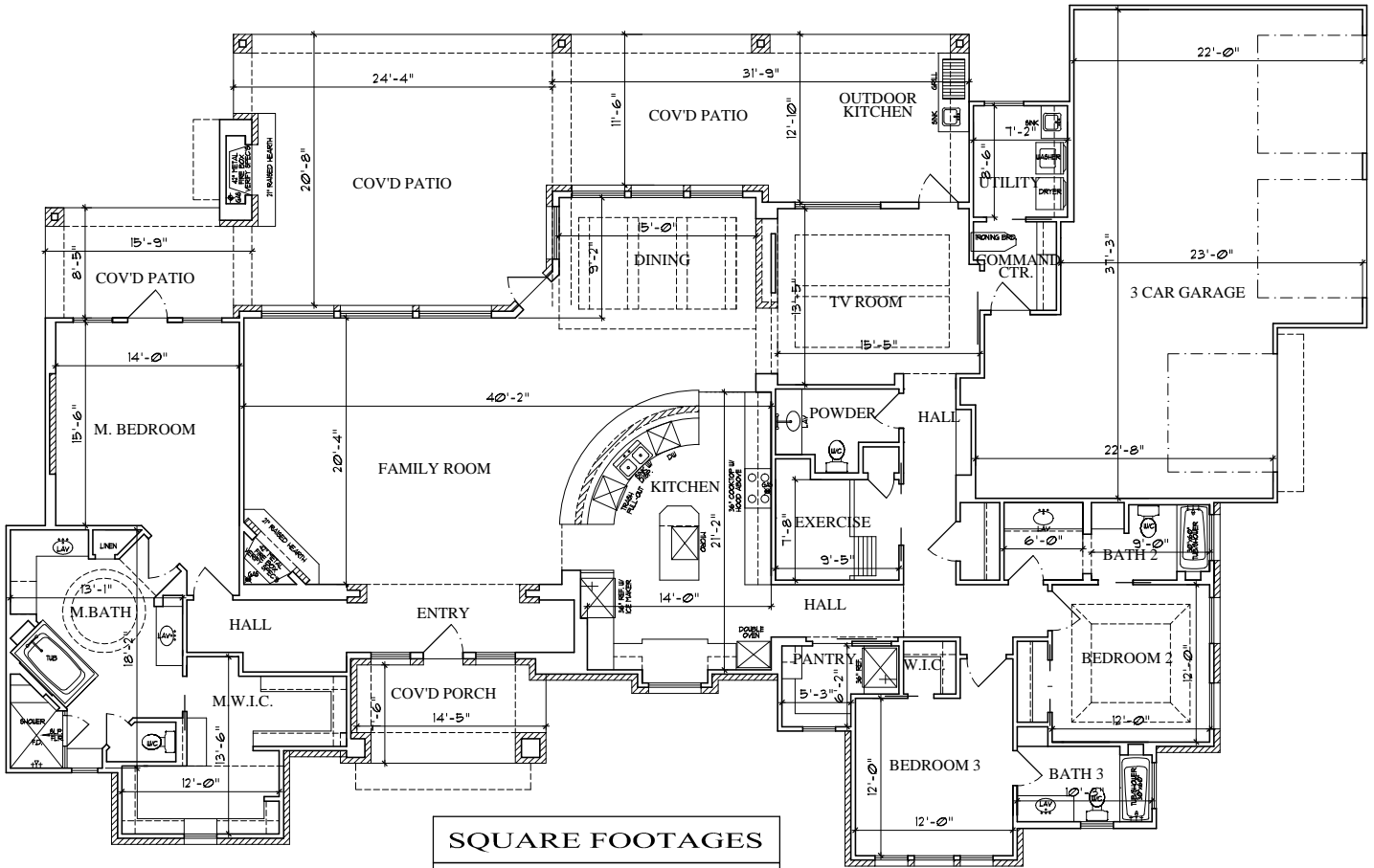


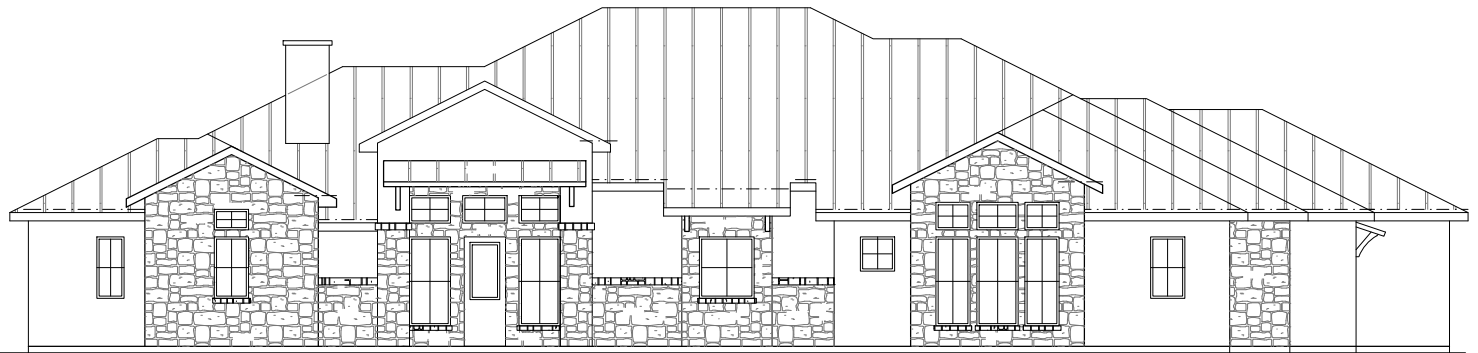


# ALAIR



SQUARE FOOTAGES	
TOTAL LIVING	3233. SQ. FT.
3 CAR GARAGE	865. SQ. FT.
COVID PORCH	116. SQ. FT.
COVID PATIO	1029. SQ. FT.

**FLOOR PLAN**  
NOT TO SCALE



**FRONT ELEVATION**  
NOT TO SCALE