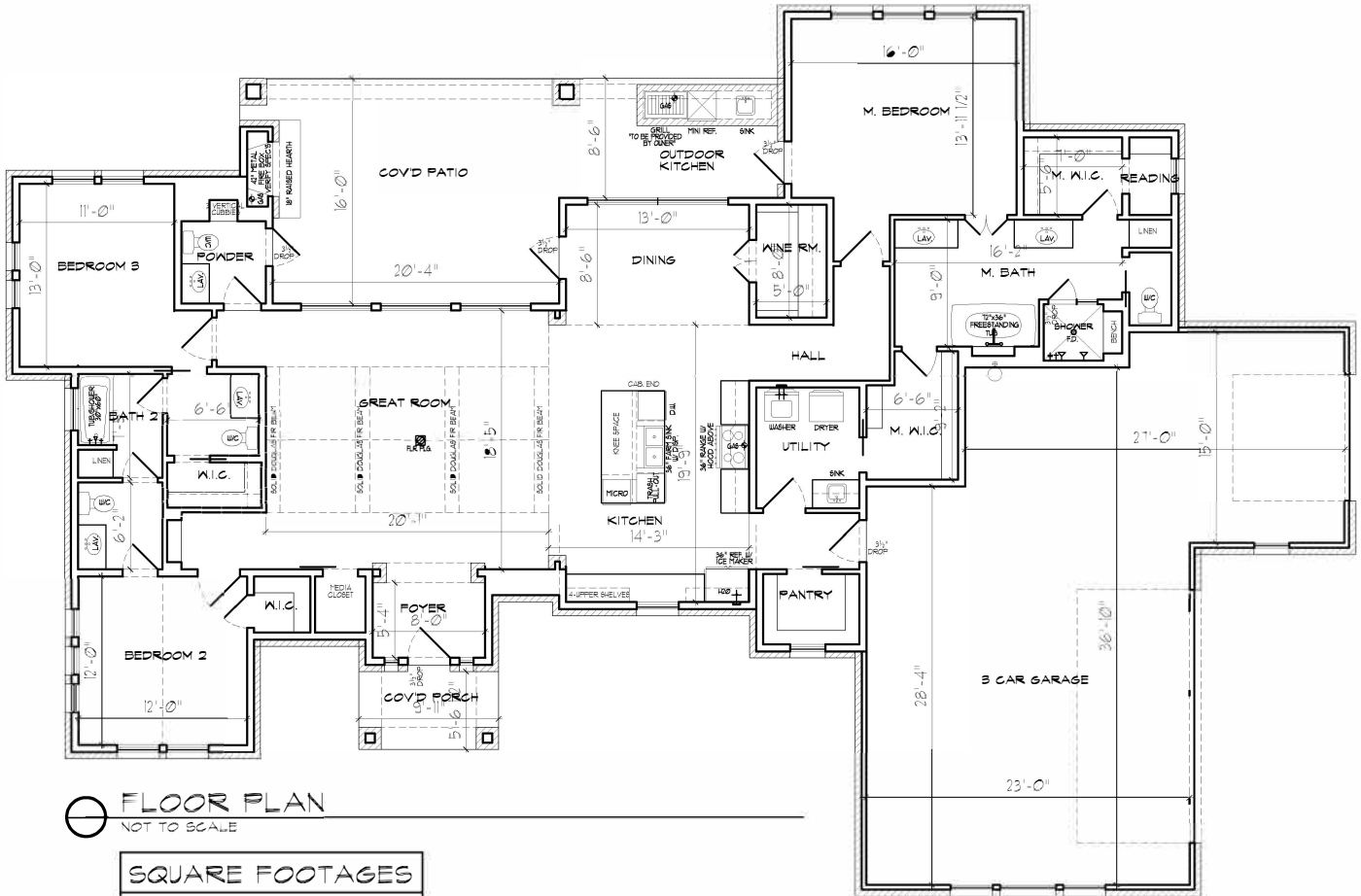


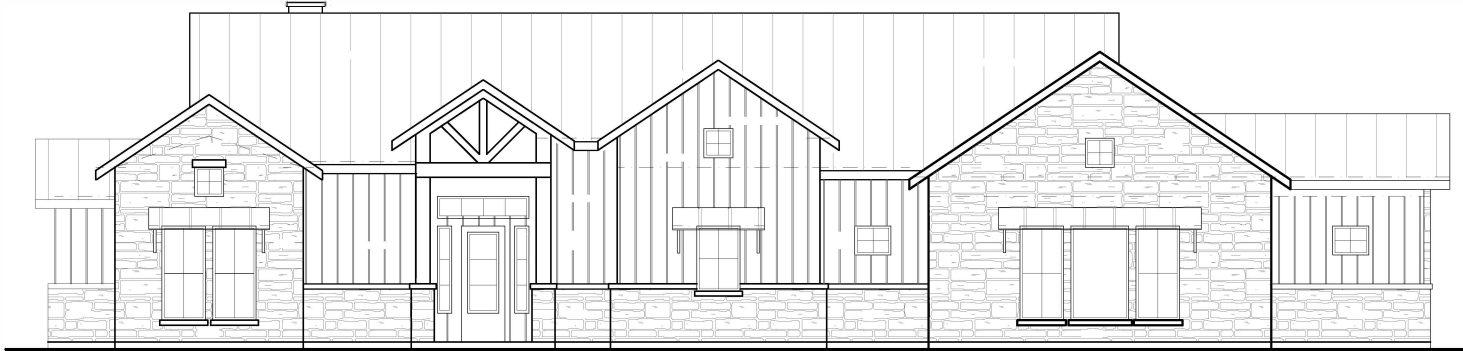


ALAIR



FLOOR PLAN
NOT TO SCALE

| SQUARE FOOTAGES | |
|-----------------|--------------|
| TOTAL LIVING | 2375 SQ. FT. |
| 3 CAR GARAGE | 997 SQ. FT. |
| COVID PORCH | 59 SQ. FT. |
| COVID PATIO | 48 SQ. FT. |



FRONT ELEVATION
NOT TO SCALE